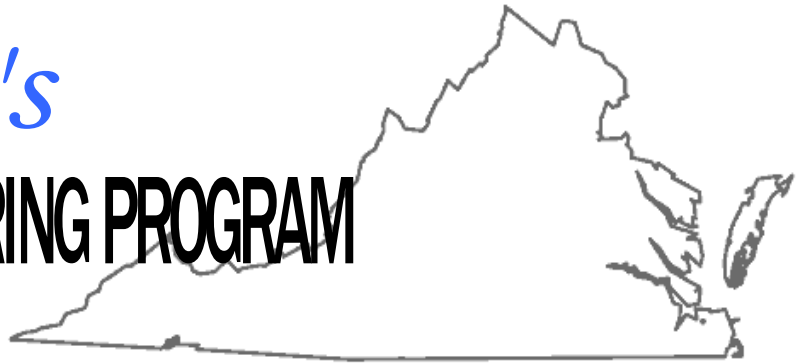


*Virginia's*

**INTENSIVE CASE MONITORING PROGRAM**



**VIRGINIA DEPARTMENT  
OF SOCIAL SERVICES**

**DIVISION OF CHILD  
SUPPORT ENFORCEMENT**

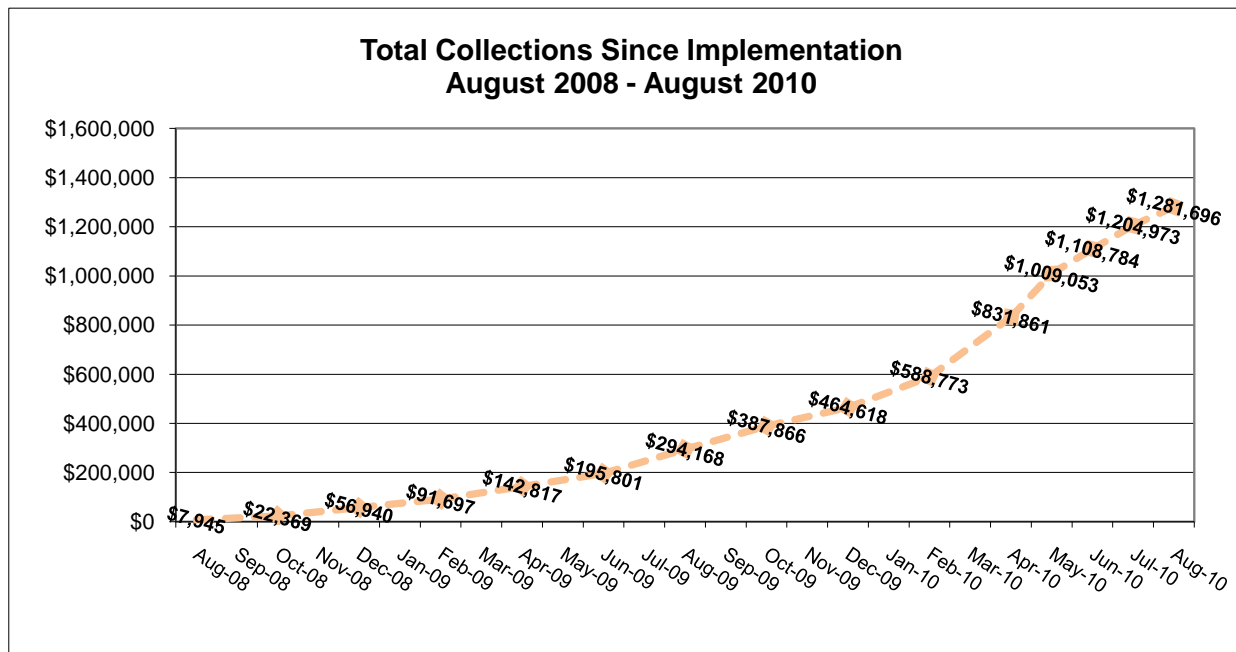
**August 2010**

## ICMP Summary – August 2010

- **521 participants have been enrolled in ICMP to date:**
  - 188 Active Participants
  - 161 Graduated
  - 172 Dropped (*found noncompliant by the Judge*)

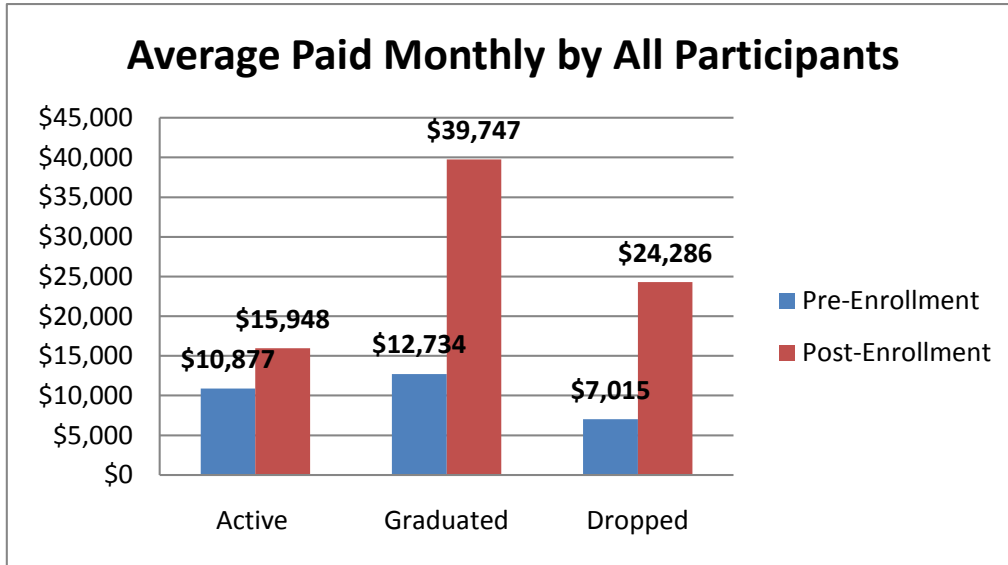
|                 | Active     | Graduated  | Dropped    | Total      |
|-----------------|------------|------------|------------|------------|
| Campbell County | 25         | 46         | 48         | 119        |
| Fairfax         | 16         | 6          | 23         | 45         |
| Hampton         | 32         | 45         | 27         | 104        |
| Spotsylvania    | 31         | 17         | 23         | 71         |
| Winchester      | 15         | 37         | 26         | 78         |
| Roanoke         | 42         | 6          | 23         | 71         |
| Petersburg      | 22         | 4          | 2          | 28         |
| Orange          | 5          | 0          | 0          | 5          |
| <b>Total</b>    | <b>188</b> | <b>161</b> | <b>172</b> | <b>521</b> |

- **Total ICMP Collections - \$1,281,696**

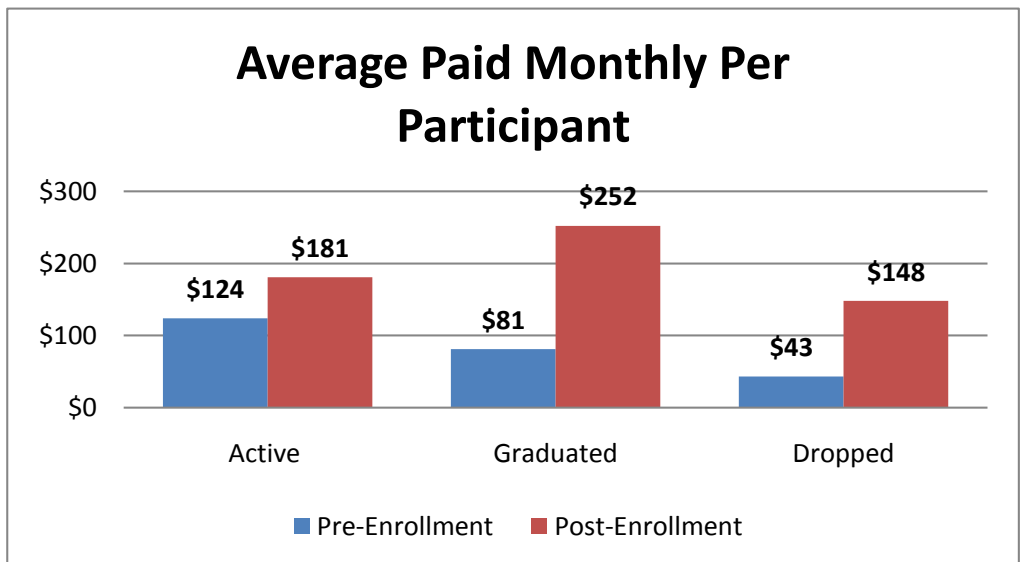


➤ **Average Monthly Collections**

The graph below shows the average monthly collections for all ICMP participants through August 2010. It compares Pre- and Post- payments made by Active, Graduated and Dropped participants.



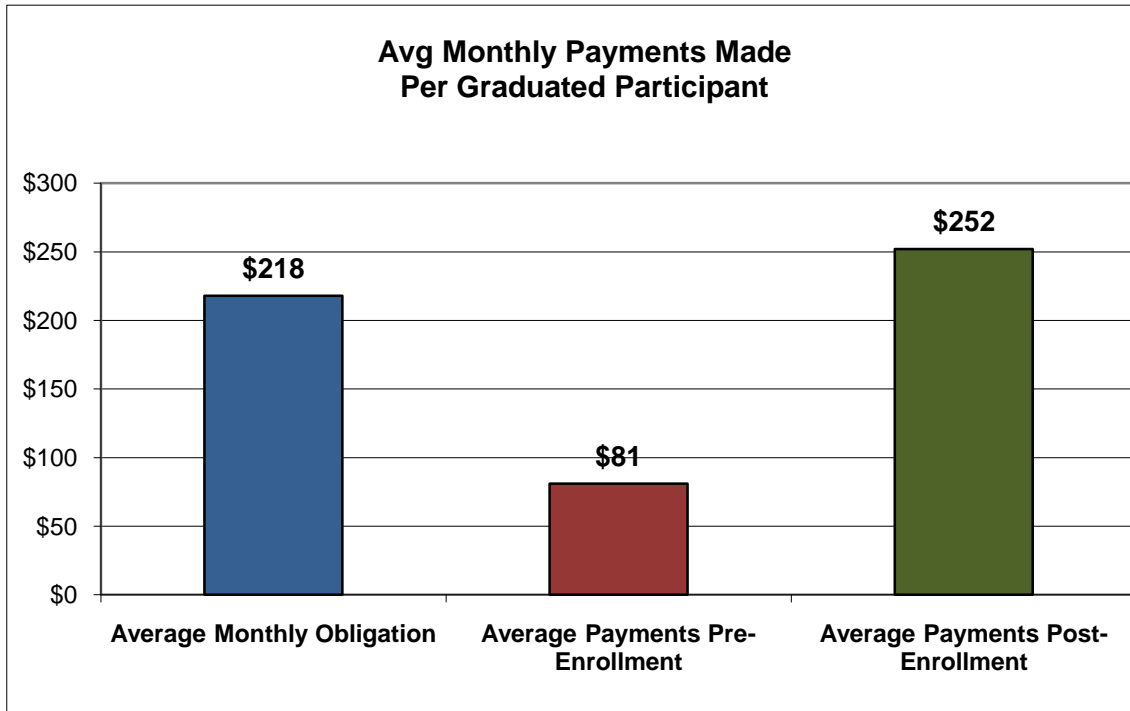
The following graph shows the average paid monthly per Active, Graduated and Dropped participant Pre- and Post- enrollment.



<sup>1</sup> Pre-Enrollment – Payments made the first 6 of the 7 months prior to enrollment  
 Post-Enrollment – Payments made since enrollment in ICMP

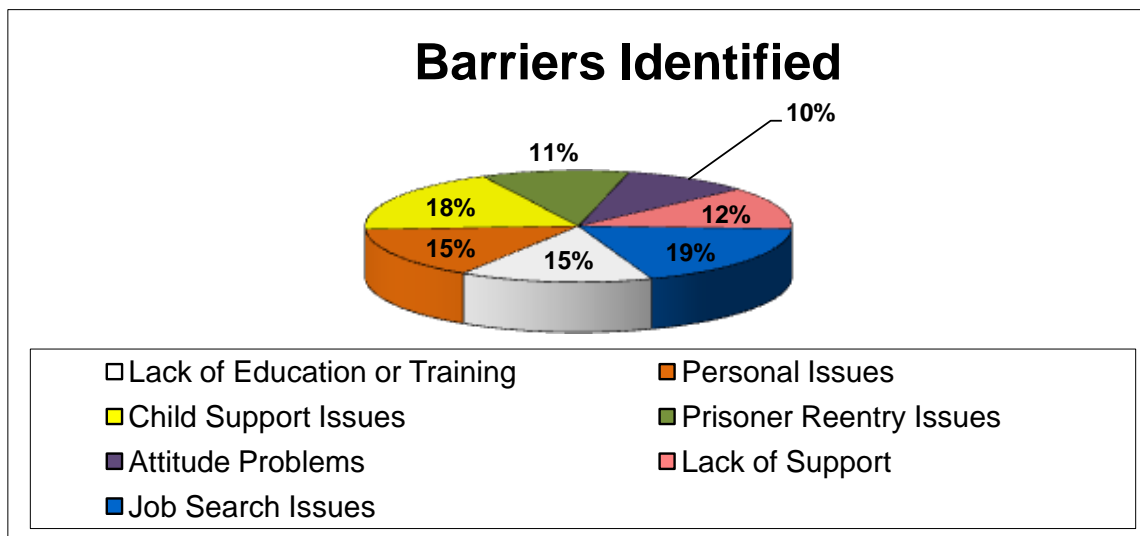
➤ **Graduated Participants**

The following graph compares the average monthly obligation to the average monthly payments made Pre- and Post- enrollment for graduated participants with a current support order. The few graduated NCPs with either closed cases or arrears only cases are not included in this analysis.



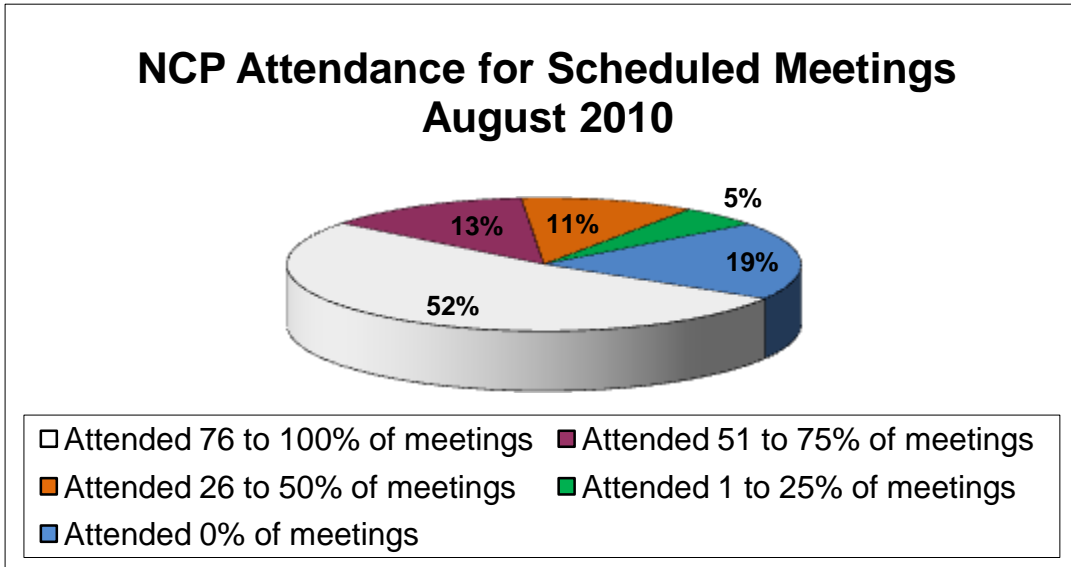
➤ **Barriers**

The following graph shows barriers identified as obstacles to paying child support.

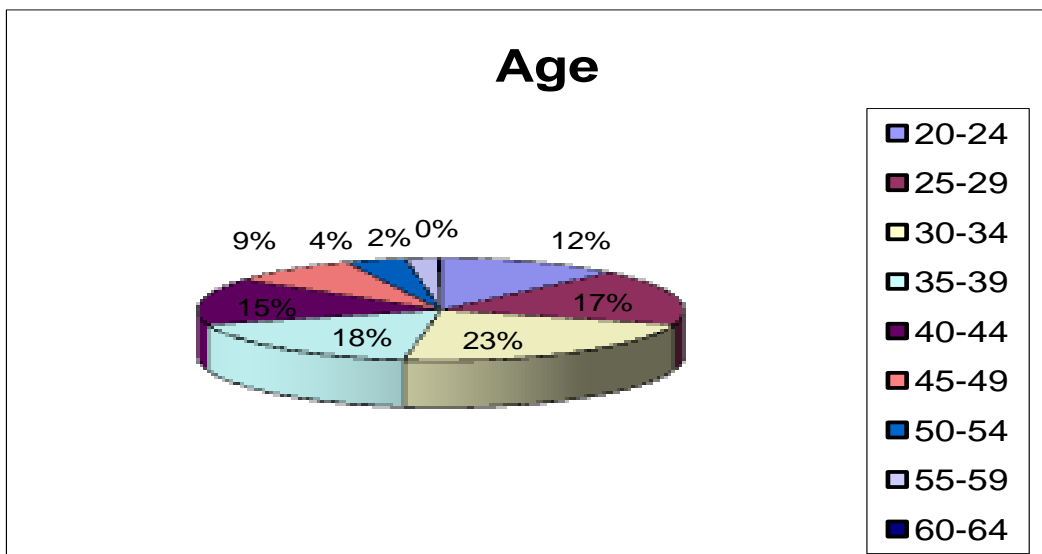


➤ **Compliance**

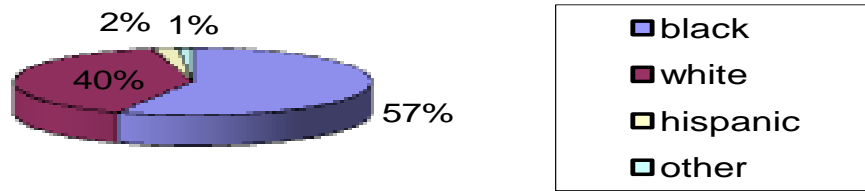
The following graph records the NCP's compliance with attendance for mandatory appointments with the Case Manager



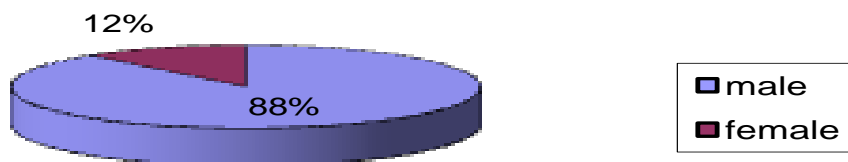
➤ **Demographics**



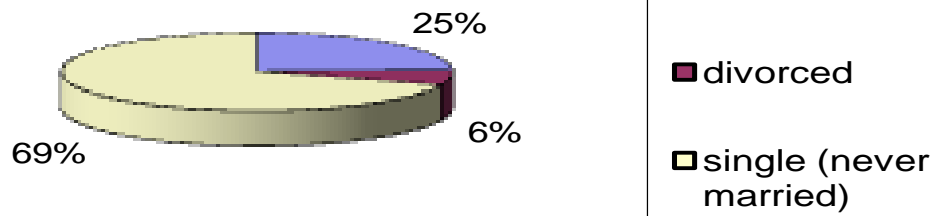
## Race



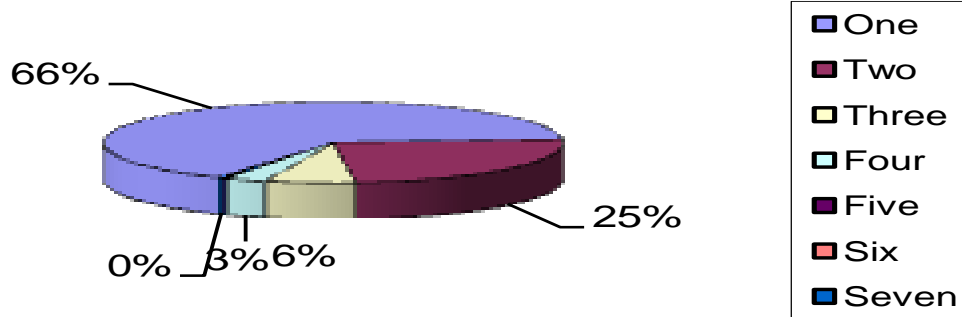
## Sex



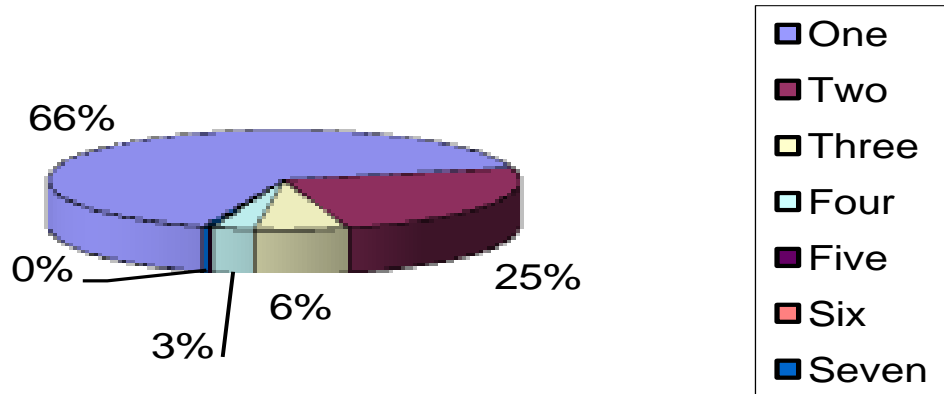
## Marital Status



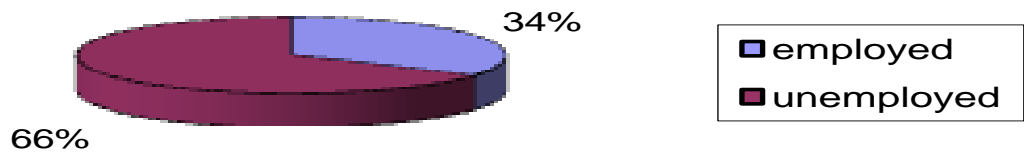
## Number of Children



## Number of Cases



## Employment



## Highest Level of Education

